



Donald R. Sattler

November 5, 1928 - January 20, 2015

Blissfield—Donald 'Don' (Freddie) Sattler, 86 formerly of Blissfield, passed away Tuesday, January 20, 2015, at Tecumseh Place II.

He was born in Metamora, OH, November 5, 1928 to Robert and Ruth (Irwin) Sattler. He married Marian Haas on November 10, 1946 in Blissfield. They enjoyed 64 years of marriage before she preceded him in death in 2010.

Don worked with the Crist Company, GoCon/Goodrich and later on with Lenawee Kreighoff doing masonry work and carpentry. Family was important to Don, especially his grandchildren. He and his wife, Marian spent many hours at Lenawee County Fair watching their grandchildren show their 4-H projects. He also enjoyed fishing, hunting and spending time with his family up north at the family cabin. Christmas time was always special to Don as he created presents for family, especially birdhouses. He attended Blissfield United Brethren Church.

Survivors include his children, Greg (Tanna) Sattler of Tecumseh, Laura (Dan) Sauter of Palmyra and Lezlie Whiteford of TX; eleven grandchildren; twelve great grandchildren and a brother Jim (Sue) Sattler of Assumption, OH.

In addition to his wife Marian, he was preceded in death by his parents; daughter, Brenda; a son, Brad Sattler; and four brothers and sisters.

Funeral services for Don will be at 11 a.m., Friday, January 23, 2015, at Wagley Funeral Home, Tagsold Chapel, with Pastor Tom Hawkins officiating.

Burial will follow at Pleasant View Cemetery in Blissfield. Visitation will be Thursday, from 2 to 4 p.m. and 6 to 8 p.m. at the Tagsold Chapel. In lieu of

flowers, memorial contributions may be made to Hospice of Lenawee or the Alzheimer's Association. Memories and online condolences are welcomed at www.WagleyFuneralHome.com

Tribute Wall

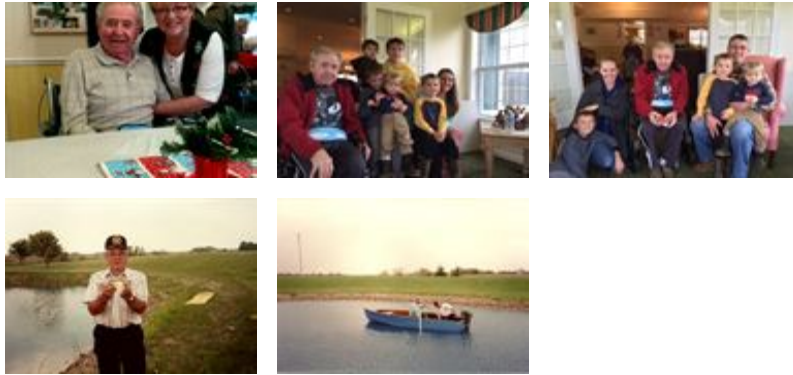


“ *Donald R. Sattler*

January 28, 2023 at 12:24 PM



“ *99 files added to the album Life Tributes*



Wagley Funeral Home - January 22, 2015 at 07:12 AM



“ *Laura and Dan and families Our thoughts are with you at this difficult time.*

Mike & Linda Marvin - Neighbors

Mike & Linda Marvin - January 21, 2015 at 07:46 PM